



DOWNING COLLEGE
UNIVERSITY OF CAMBRIDGE

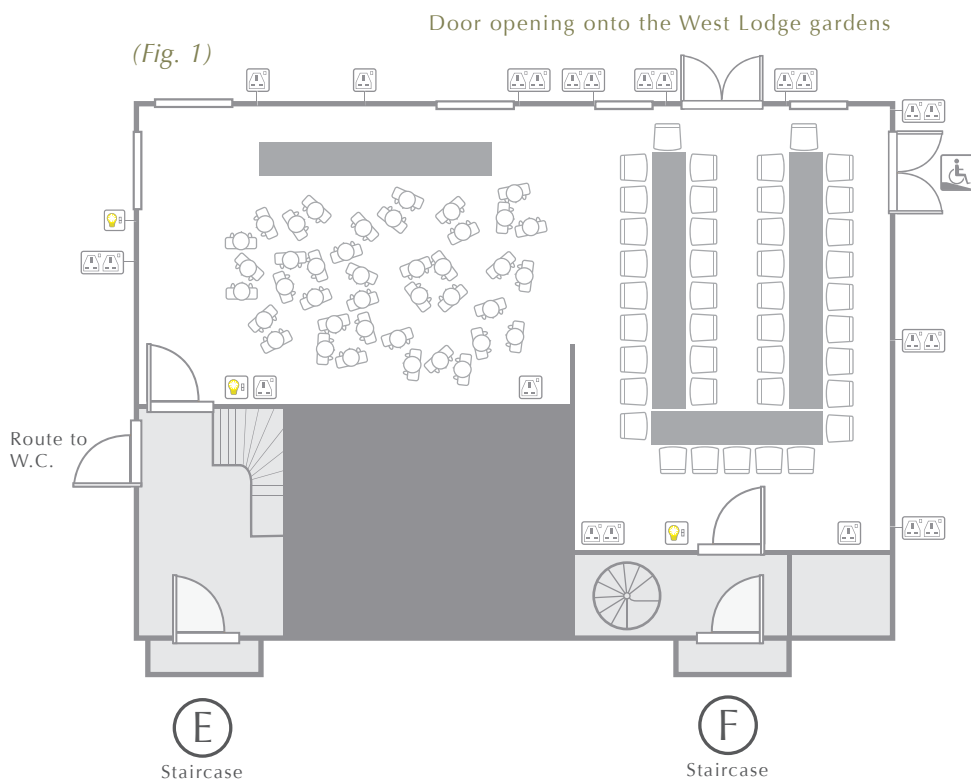
THE WEST LODGE & MAITLAND ROOMS

DIMENSIONS

West Lodge 8m x 5m	40m ²
Maitland Room 5.5m x 8m	44m ²
Combined	84m ²

CAPACITY

Drinks and Dinner (Fig. 1)	41
Single Sprig Dinner	46
Standing Reception	80
Seated Buffet	48
U-shape	41
Boardroom	22



Please note the Music Room and The Tim Cadbury Room on the first floor are also available for additional space

These two adjoining, multipurpose rooms are suitable for smaller seminars or one large meeting room when joined. They are particularly ideal for company presentations, private dinners, receptions and parties.

VIEW FROM THE WEST LODGE LOOKING INTO THE MAITLAND ROOM.



CONFERENCE SERVICES

01223 334 860

conference@dow.cam.ac.uk

PLEASE SEE OVERLEAF FOR A MAP SHOWING THE ROOM'S LOCATION IN THE COLLEGE AND ALTERNATIVE ROOM LAYOUTS

THE WEST LODGE & MAITLAND ROOMS

DOWNING COLLEGE CAMBRIDGE

▲ FINDING THE WEST LODGE & MAITLAND ROOM

All visitors are kindly requested to report to the Porters' Lodge. This can be found on the left hand side as you walk through the main College gates on Regent Street.

P PARKING

Once inside the main gate, turn right, pass through the barrier and follow car park along to the 'Conference Parking Area'.

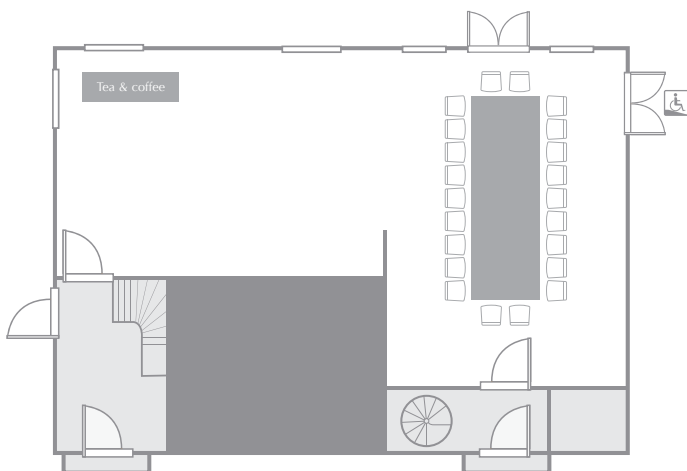
✓ FIRE ASSEMBLY POINT

In the unlikely event of a fire, please note the Fire Assembly Point for the West Lodge & Maitland Room is on the grassed area at the front of the West Range.

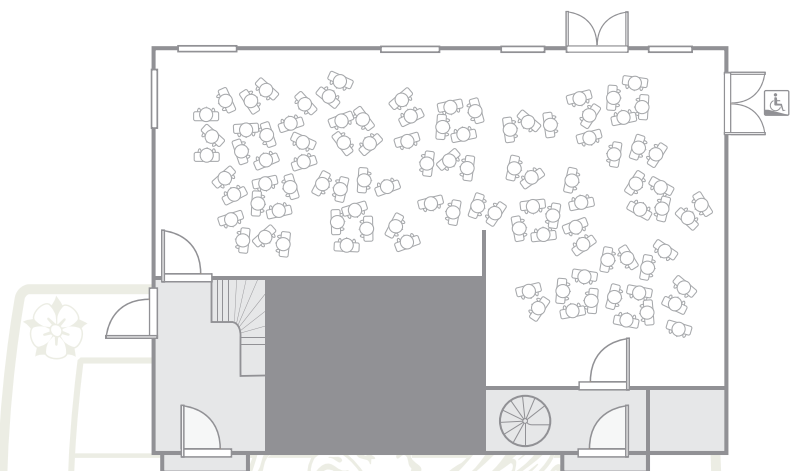


Ground floor

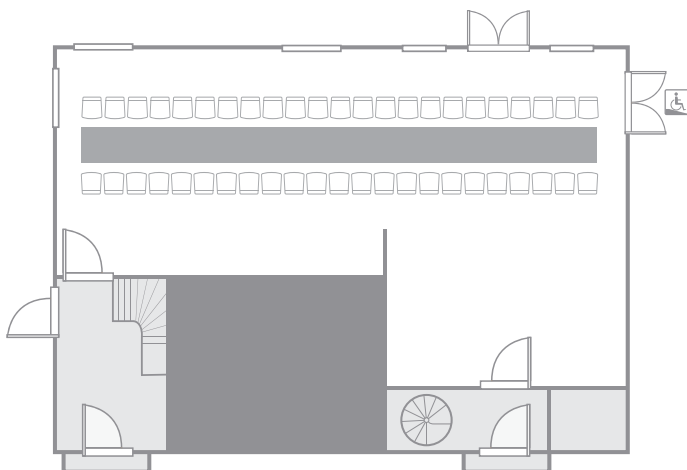
Boardroom 22



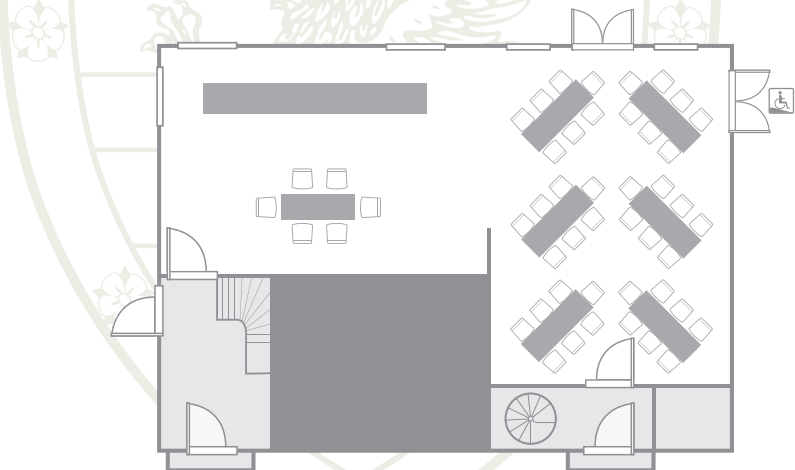
Standing Reception 80



Single Sprig Dinner 46



Seated Buffet 48



To discuss further layouts please contact Conference Services **01223 334 860**

www.downing-conferences-cambridge.com | conference@dow.cam.ac.uk