



DOWNING COLLEGE  
UNIVERSITY OF CAMBRIDGE

# THE MUSIC ROOM & THE TIM CADBURY ROOM

## DIMENSIONS

Music Room 8m x 5.5m

44m<sup>2</sup>

The Tim Cadbury Room 5.5m x 11.5m

63m<sup>2</sup>

Combined

107m<sup>2</sup>

## CAPACITY

U - shape

(Fig. 1) 22

Exam

25

Classroom

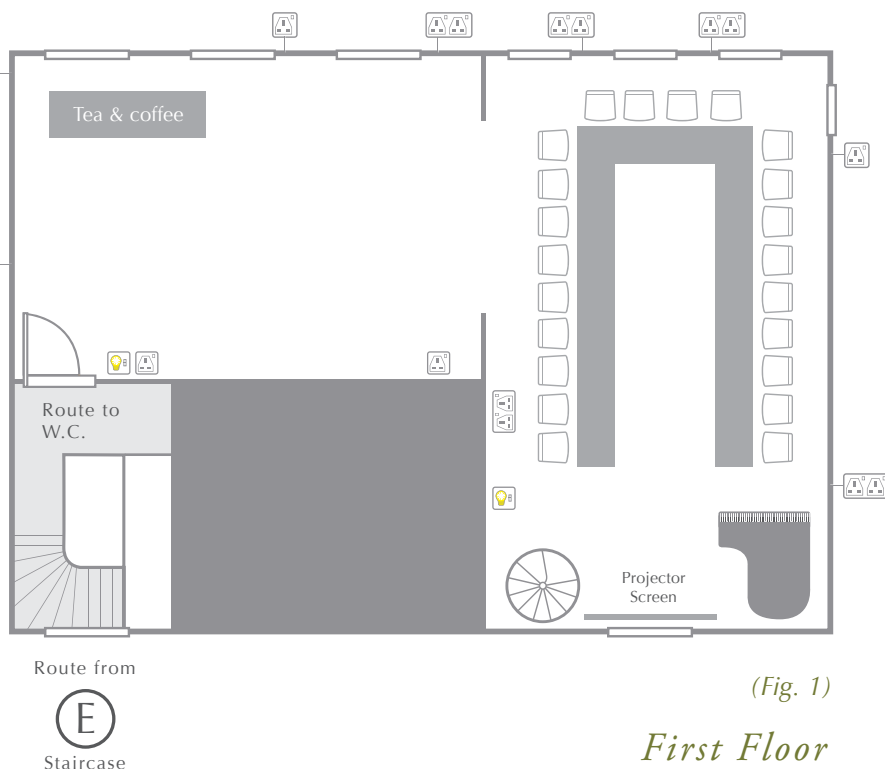
24

Boardroom

24

Theatre and Registration

48



(Fig. 1)

## First Floor

## EQUIPMENT

Data projector screen and laptop. Flip charts are available on request.

Please note the West Lodge and Maitland rooms on the ground floor are also available for additional space

A stunning combination of two adjoining rooms which can be used as one combined space or as separate rooms. An ideal venue for boardroom style meetings or presentations, breakout rooms and refreshments.

VIEW OF THE MUSIC ROOM.



CONFERENCE SERVICES

01223 334 860

conference@dow.cam.ac.uk

PLEASE SEE OVERLEAF FOR A MAP SHOWING THE ROOM'S LOCATION IN THE COLLEGE AND ALTERNATIVE ROOM LAYOUTS

# THE MUSIC ROOM & THE TIM CADBURY ROOM

## DOWNING COLLEGE CAMBRIDGE

### ▲ FINDING THE MUSIC ROOM AND THE TIM CADBURY ROOM

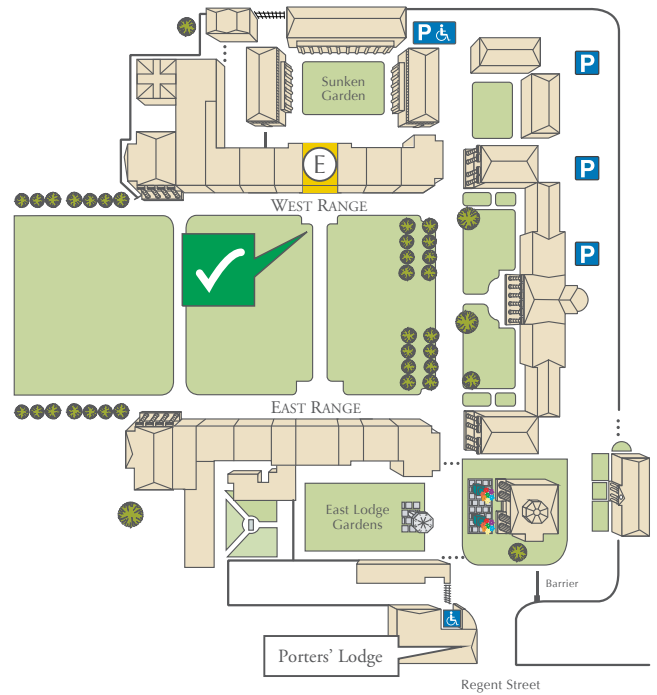
All visitors are kindly requested to report to the Porters' Lodge. This can be found on the left hand side as you walk through the main College gates on Regent Street.

### P PARKING

Once inside the main gate, turn right, pass through the barrier and follow car park along to the 'Conference Parking Area'.

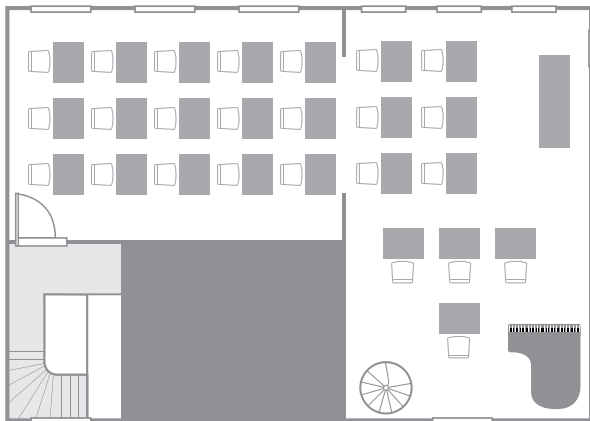
### ✓ FIRE ASSEMBLY POINT

In the unlikely event of a fire, please note the Fire Assembly Point for the Music Room and The Tim Cadbury Room is on the grassed area at the front of the West Range.

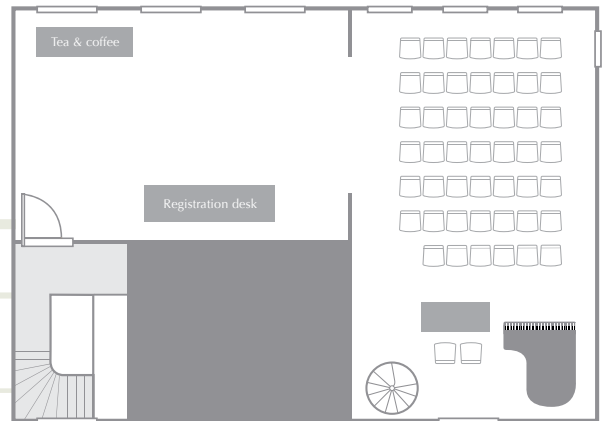


First floor

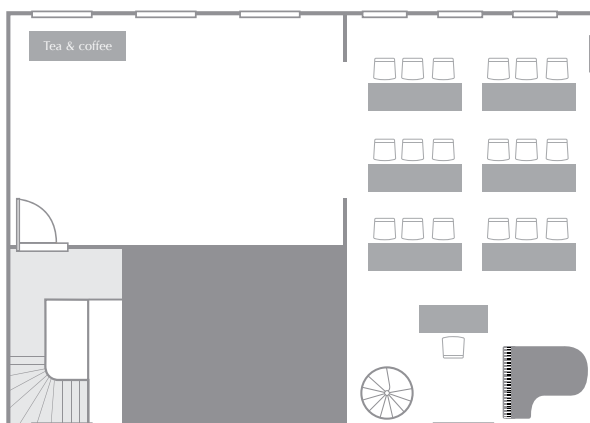
Exam 25



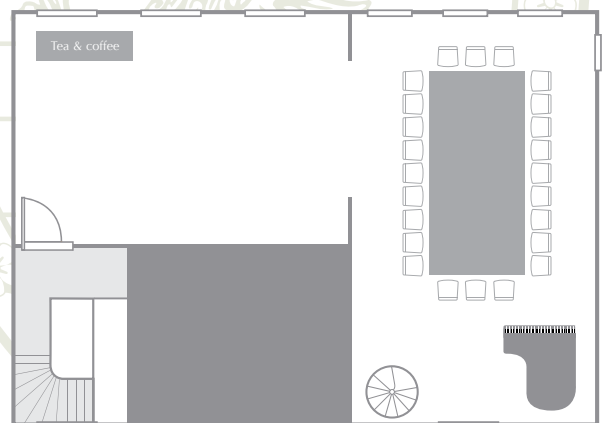
Theatre and Registration 48



Classroom 24



Boardroom 24



To discuss further layouts please contact Conference Services

01223 334 860

[www.downing-conferences-cambridge.com](http://www.downing-conferences-cambridge.com) | [conference@dow.cam.ac.uk](mailto:conference@dow.cam.ac.uk)