



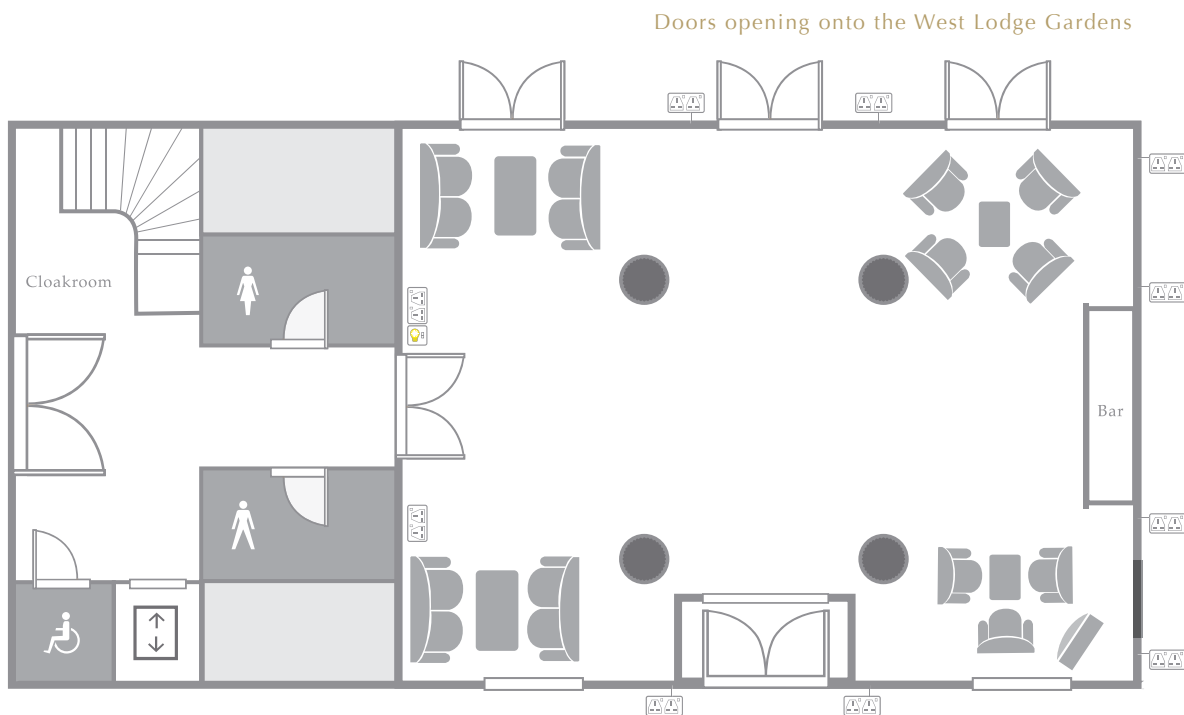
DOWNING COLLEGE  
UNIVERSITY OF CAMBRIDGE

# THE HOWARD BUILDING GROUND FLOOR

(Fig. 1)  
*Ground Floor*

**DIMENSIONS**

8m x 6m **48m<sup>2</sup>**



**CAPACITY**

Drinks Reception (Fig. 1 above) **130**      Finger Buffet **100**      Fork Buffet **60**

**EQUIPMENT** Television.

A reception area with a bar, suitable for registrations, receptions, exhibitions, coffee/tea breaks and buffets. It is linked by stairs and accessible lift to the 160 person, fully equipped Howard Lecture Room on the first floor.

VIEW FROM THE ENTRANCE DOORS.



CONFERENCE SERVICES

**01223 334 860**

PLEASE SEE OVERLEAF FOR A MAP SHOWING THE ROOM'S LOCATION IN THE COLLEGE AND AN ALTERNATIVE ROOM LAYOUT

[conference@dow.cam.ac.uk](mailto:conference@dow.cam.ac.uk)

# THE HOWARD BUILDING GROUND FLOOR

## DOWNING COLLEGE CAMBRIDGE

### FINDING THE HOWARD BUILDING

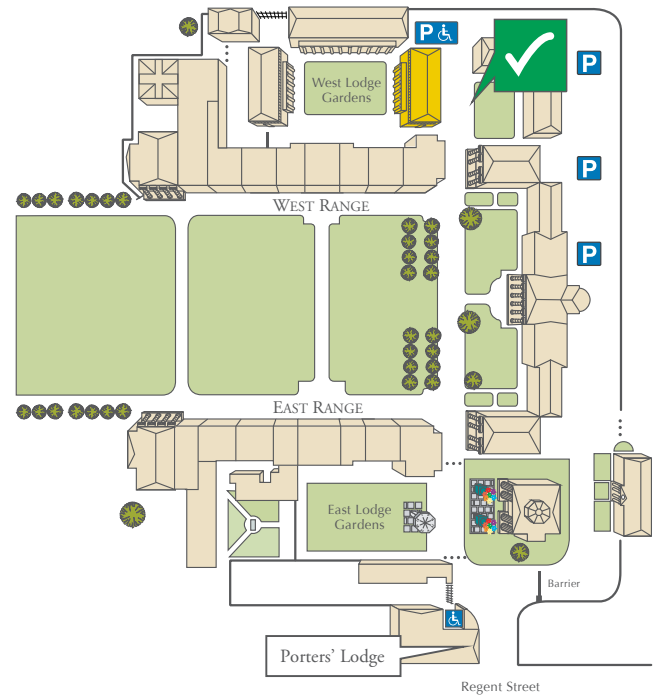
All visitors are kindly requested to report to the Porters' Lodge. This can be found on the left hand side as you walk through the main College gates on Regent Street.

### PARKING

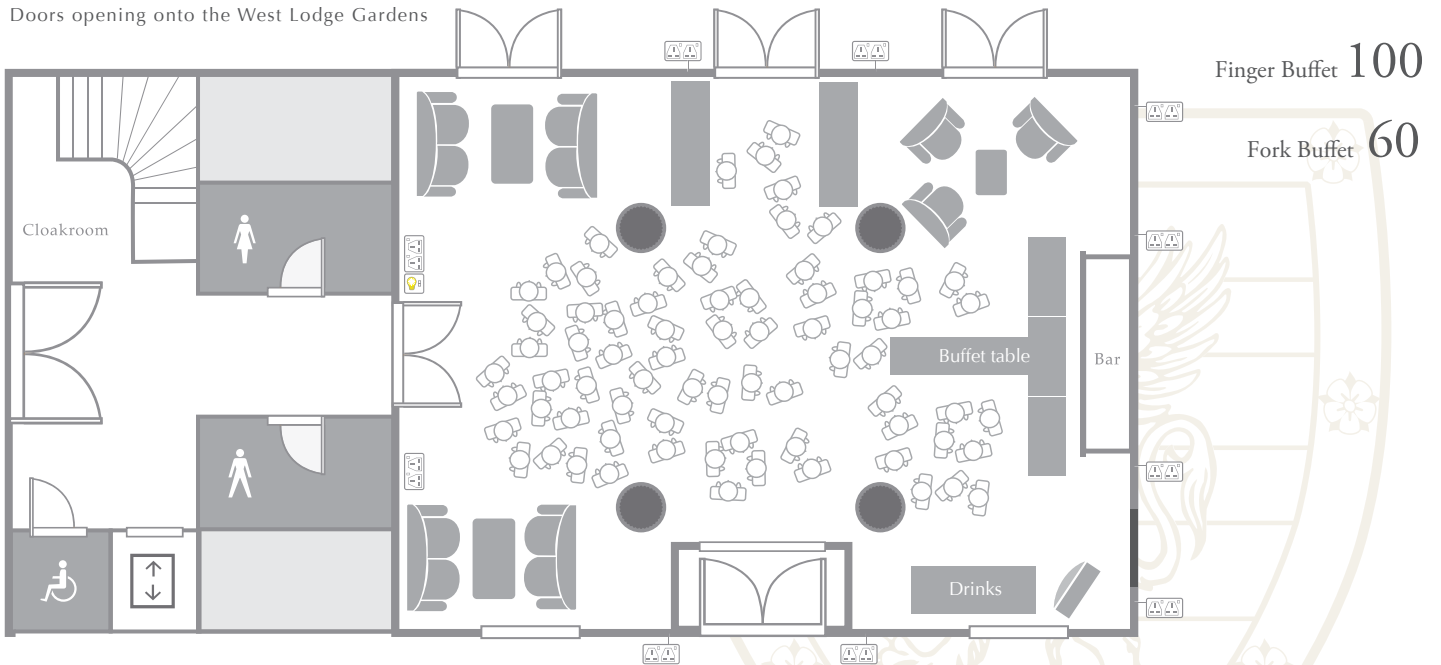
Once inside the main gate, turn right, pass through the barrier and follow car park along to the 'Conference Parking Area'.

### FIRE ASSEMBLY POINT

In the unlikely event of a fire, please note the Fire Assembly Point for the Howard Building is on the grassed area at the front of the building.



Doors opening onto the West Lodge Gardens



To discuss further layouts please contact Conference Services

01223 334 860

[www.downing-conferences-cambridge.com](http://www.downing-conferences-cambridge.com) | [conference@dow.cam.ac.uk](mailto:conference@dow.cam.ac.uk)