



DOWNING COLLEGE  
UNIVERSITY OF CAMBRIDGE

# THE HOWARD BUILDING FIRST FLOOR

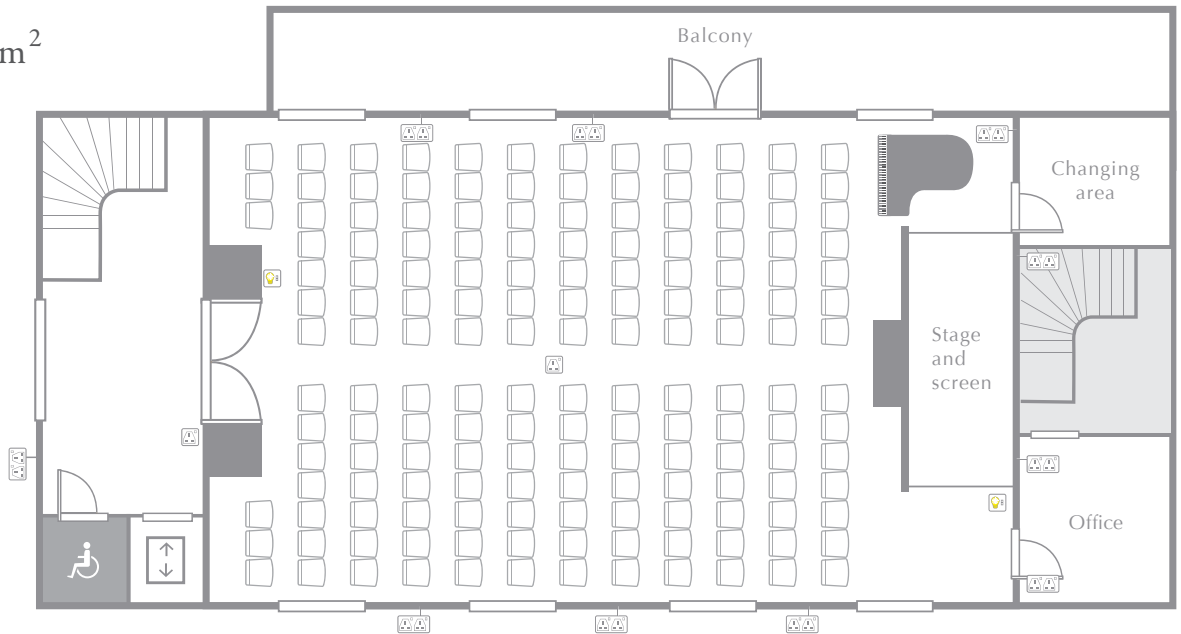
## DIMENSIONS

15m x 9m **135m<sup>2</sup>**

(Fig. 1)

## First Floor

Stairs lead down to the ground floor bar and reception area.



## CAPACITY

Lecture (Fig. 1 above) **150**      Standing **180**      Classroom **60**      Cabaret **42**

EQUIPMENT Data projector with internet access, CD/DVD, Flip chart, Radio microphones, Hearing loop, Wi-Fi coverage.

This first floor Lecture Room is fully equipped and a perfect setting for presentations, lectures and other events. Complemented by the ground floor reception and breakout area.

VIEW FROM THE BACK OF THE ROOM SET UP AS A LECTURE ROOM.



CONFERENCE SERVICES

**01223 334 860**

PLEASE SEE OVERLEAF FOR A MAP SHOWING THE ROOM'S LOCATION IN THE COLLEGE AND ALTERNATIVE ROOM LAYOUTS

[conference@dow.cam.ac.uk](mailto:conference@dow.cam.ac.uk)

# THE HOWARD BUILDING FIRST FLOOR

## DOWNING COLLEGE CAMBRIDGE

### FINDING THE HOWARD BUILDING

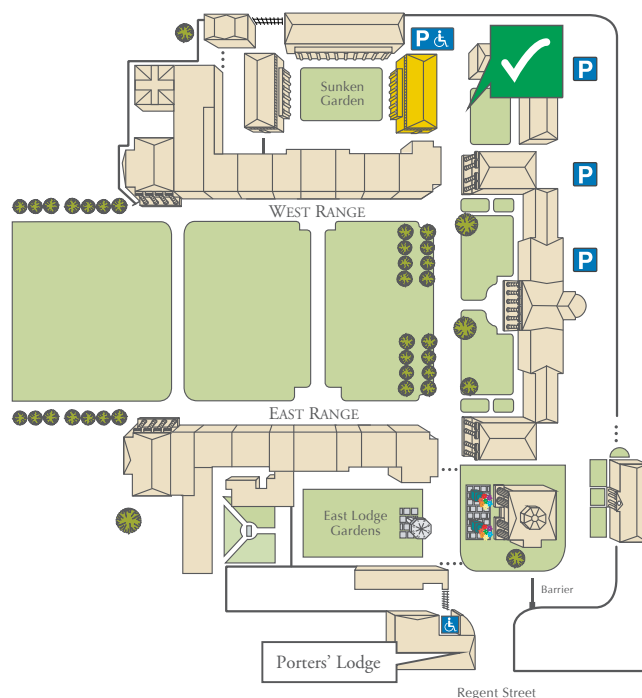
All visitors are kindly requested to report to the Porters' Lodge. This can be found on the left hand side as you walk through the main College gates on Regent Street.

### PARKING

Once inside the main gate, turn right, pass through the barrier and follow car park along to the 'Conference Parking Area'.

### FIRE ASSEMBLY POINT

In the unlikely event of a fire, please note the Fire Assembly Point for the Howard Building is on the grassed area at the front of the building.

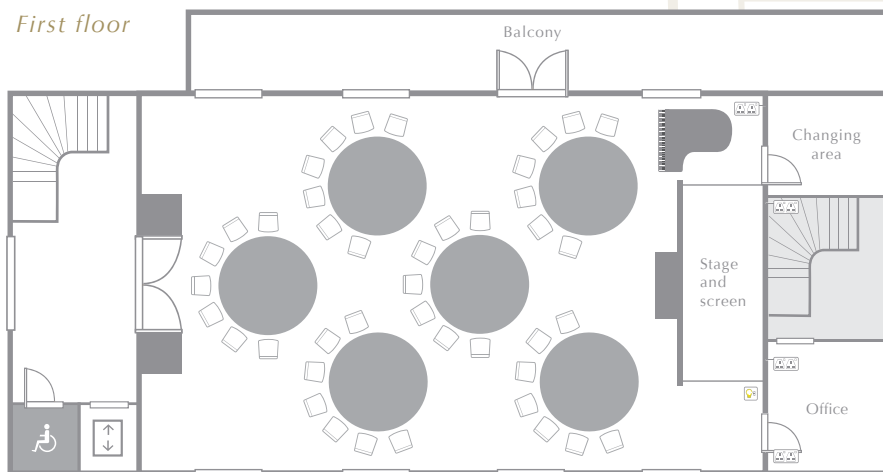


First floor



Classroom 60

First floor



Cabaret 42

To discuss further layouts please contact Conference Services

01223 334 860

[www.downing-conferences-cambridge.com](http://www.downing-conferences-cambridge.com) | [conference@dow.cam.ac.uk](mailto:conference@dow.cam.ac.uk)