



DOWNING COLLEGE
UNIVERSITY OF CAMBRIDGE

THE MUSIC ROOM AND ANNEX

DIMENSIONS

Music Room 8m x 5.5m **44m²**

Annex 5.5m x 11.5m **63m²**

Combined **107m²**

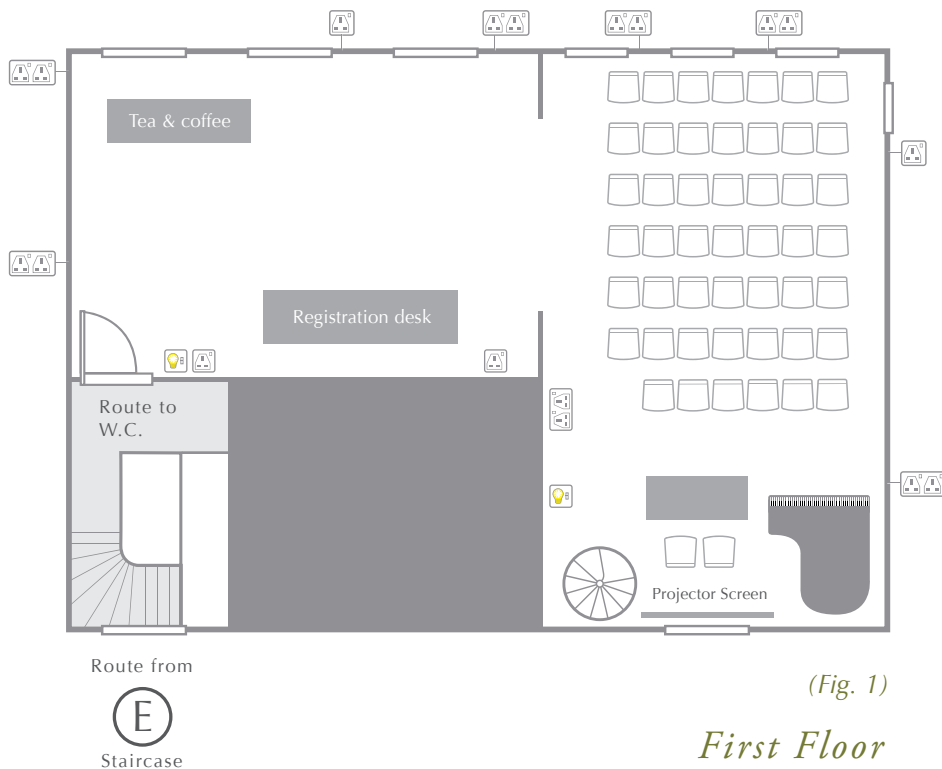
CAPACITY

Theatre and Registration (Fig. 1) **48**

Exam **25**

Classroom **40**

Standing Reception **80**



(Fig. 1)

First Floor

Please note the West Lodge and Maitland rooms on the ground floor are also available for additional space

EQUIPMENT

Data projector and Screen, OHP, Mobile PA system, Video / TV, and Flip charts are available on request.

A stunning combination of two adjoining rooms which can be used as one combined space or as separate rooms. An ideal venue for boardroom style meetings or presentations, breakout rooms and refreshments.

VIEW OF THE MUSIC ROOM.



CONFERENCE SERVICES

01223 334 860

conference@dow.cam.ac.uk

PLEASE SEE OVERLEAF FOR A MAP SHOWING THE ROOM'S LOCATION IN THE COLLEGE AND ALTERNATIVE ROOM LAYOUTS

THE MUSIC ROOM AND ANNEX

DOWNING COLLEGE CAMBRIDGE

FINDING THE MUSIC ROOM AND ANNEX

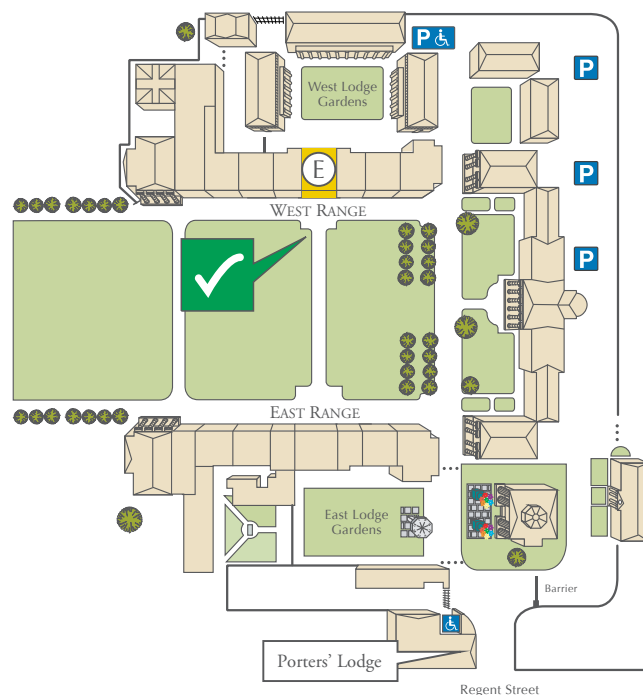
All visitors are kindly requested to report to the Porters' Lodge. This can be found on the left hand side as you walk through the main College gates on Regent Street.

PARKING

Once inside the main gate, turn right, pass through the barrier and follow car park along to the 'Conference Parking Area'.

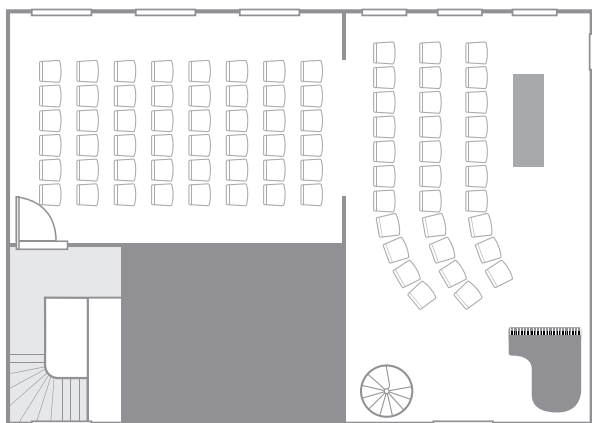
FIRE ASSEMBLY POINT

In the unlikely event of a fire, please note the Fire Assembly Point for the Music Room and Annex is on the grassed area at the front of the West Range.

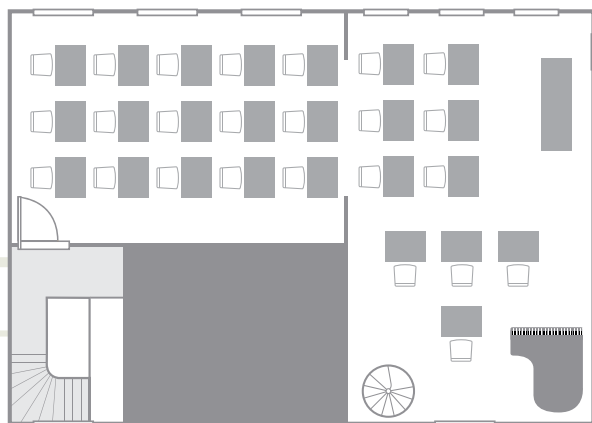


First floor

Lecture Theatre **80**



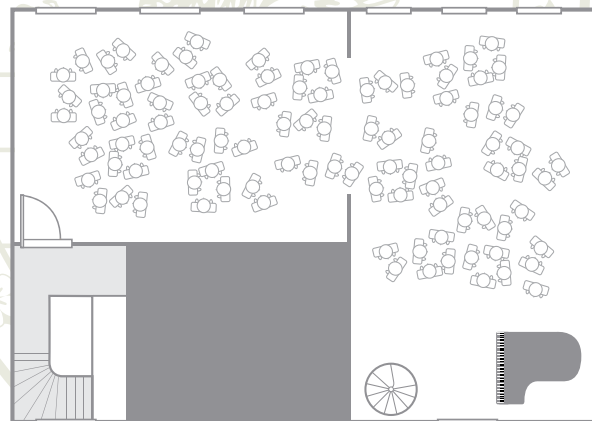
Exam **25**



Classroom **40**



Standing Reception **80**



To discuss further layouts please contact Conference Services

01223 334 860

www.downing-conferences-cambridge.com | conference@dow.cam.ac.uk